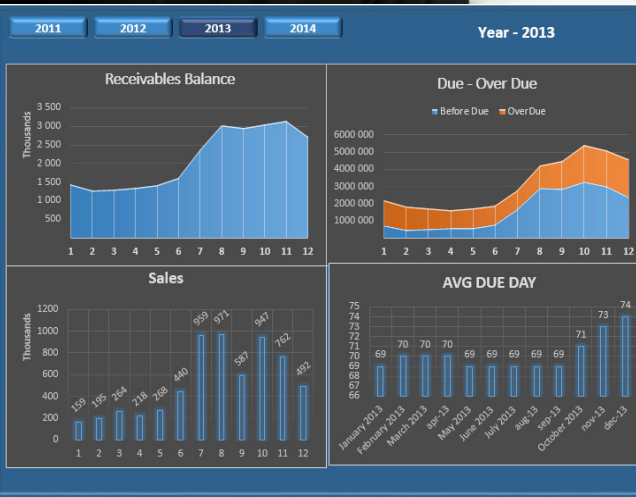


Performance Canvas



FAQ

FREQUENTLY ASKED QUESTIONS

What exactly is Performance Canvas Financials?

Performance Canvas Financials is today's latest and most modern unified platform for Business Intelligence, Performance Management, and Advanced Analytics.

What are the capabilities included in the Performance Canvas Financials?

With Performance Canvas Financials, you can do reporting, planning, budgeting, consolidating, dashboarding, scorecarding, and many more. It has native Microsoft Excel Integration which allows you to leverage your skills towards easy software championship.

What is the target company size for Performance Canvas Financials?

It is ideal for medium to large companies with at least 3 people working in the finance department.

How long does it take to implement?

1-3 weeks but the actual installation is half a day.

Does pcFinancials manage different access level for each user?

Yes, you have it on any dimension to any level of detail. It is on a database level so you cannot go around the security.

Is it possible to integrate pcFinancials with Salesforce?

Yes Salesforce is easy using Excel. It can be fully automated and we have multiple ways of doing integration. The ETL (Extract Transform Load) interface can be extended.

How many level of systems is proposed to have in terms of development, quality, and production?

Normally in a large deployment they have 2 systems - 1 for Production and 1 for Dev/test.

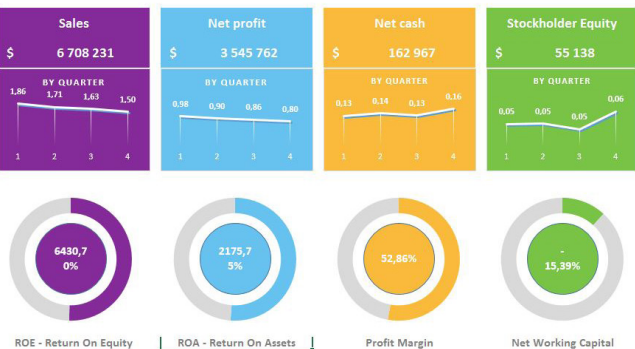
Contact us for more information on Performance Canvas Products

1260 NW Waterhouse
Ave, Ste 190
Beaverton, OR 97006
Phone 503-614-1919



www.mis-c.com
sales@mis-c.com

Performance Canvas Financials



Could we have breakdown views on the reports?

When the dimensions are added to your business model you can have all of them easily. The model is open to change and you can create your own dimensions.

Is it possible to customize report with other metrics (SaaS metrics)?

You can use any metric you prefer. All reports are delivered as templates and can be changed. You can also create new reports from scratch using the report wizard.

Is it possible to have multiple currencies within the same budget as different line items?

Yes, the tool can handle multi-currencies and multi-companies.

Can it consolidate Financial Statements?

Yes, the tool can handle multiple entities.

Can the dashboards collect non-financial data?

Yes, the system can handle all kinds of numeric data (not only financials). It can also handle text comments attached to the numeric data.

What happens if you change the characteristics of the cube?

Normally nothing changes. It will just use the new structures or hierarchies that are deployed unless you have hardcoded name references to something and that referenced name is removed entirely then this line will not be displayed anymore.

How often can delta loads (schedules) be configured?

Default is once every night but it can also be on request from Excel for a subset of the data that you are allowed to process. You can define your own schedule for specific models such as Sales if you want that loaded every 10 minutes or whatever timing suits the needs. What the tool does is it differentiates between a nightly load (which will take all new dimension data) and transaction data.

What is the billing model?

There are several options. One is through perpetual license with a maintenance fee and second is through subscription model depending on how the tool is installed.

Performance Canvas Financials



With Performance Canvas, you get:

- Pre-built Budgeting and Planning tool
- Robust Reporting Package
- Intelligent Business Rule Automation
- CAPEX
- AR/AP add-on Modules
- Profitability Analysis
- Drill Page

Off the shelf budget features of Performance Canvas Financials

- Supports separate internal budgeting module
- Integrates with third party budgeting system
- Supports budget roll up (consolidated)
- Supports fixed dollar budgets
- Allows variable budgets
- Able to input percentage growth rate
- Expresses new budget as percentage
- Imports new budget from spreadsheet
- Able to manage iterations during budget creation
- Allows comparison of actuals and commitments to budgets throughout the year
- Allows comparison of actuals to budgets throughout the year by changing assumption values
- Allows exportation of budget to Excel
- Able to build budget collaboratively with the sites
- Allows management of budget approval process
- Supports budget wages and benefits based on payroll data
- Able to budget payroll in hours, then translate to \$
- Allows to perform what-if analysis
- Maintains budgets for multiple years
- Allows to budget amounts spreadable based on monthly percentage amount
- Creates next year's budget based on a copy of previous year
- Allows budget vs. actual reporting
- Compares current year vs. last year budget
- Able to spread shared costs budgeted to all child companies based on user-defined allocation rules
- Able to control some budget assumptions at the parent and some at the child level and/or other criteria e.g. geography
- Able to compare individual company budgets side by side

Contact us for more information on Performance Canvas Products

